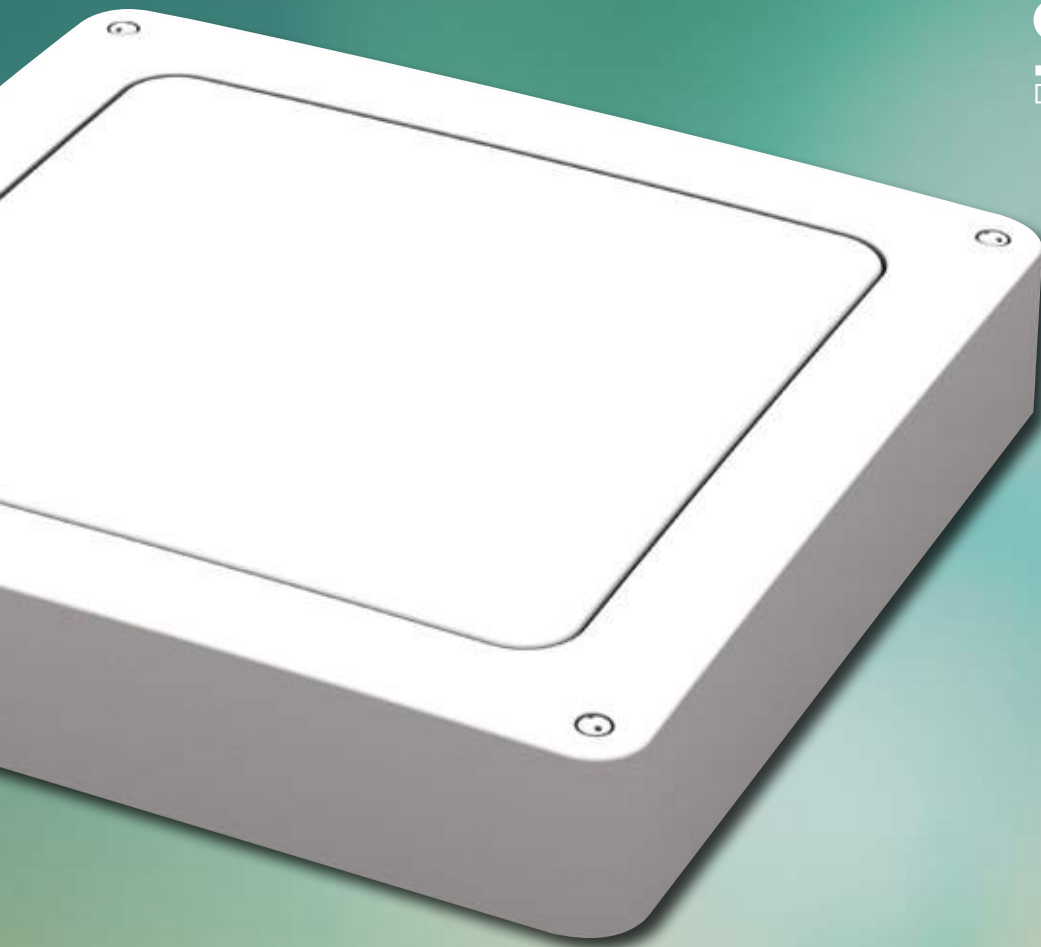


Sécurlite
DURABLE LIGHT



Effice[®]

High-efficiency LED luminaire
for residential and
public-access buildings

Effice

more than a luminaire
it's a concept...

For a many years, Securlite has been one of the leaders in lighting for common areas in public and residential buildings...

We were forerunners in using microwave detectors installed within our luminaires, and we were pioneers in the use of LEDs in bulkhead fittings.

In 2014, we are creating the Effice concept.

The proliferation of constraints imposed by standards and the general increase in awareness about energy saving lead us to offer you, through our concept, a solution that does not currently exist.

• **Effice** allows you to light in just the right way, in the right place, and at the right moment... and for a very long time. Our challenge: the right light level, in the right place, driven by high-performance, energy-saving electronics.

• **Effice**, is the smallest possible number of fixtures, the lowest possible consumption, with maximum comfort and safety.



Effice

1

- Effice means a very elegant square housing.
- Sober and timeless.
 - High impact resistance: IK10 / 20 J and VK26.

2

- Effice means high-performance light sources.
- Different powers of LED modules to suit location.
 - Latest-generation Cree ceramic based Mid-Power LEDs.
 - LED modules with nominal efficiency of over 120 lm/W.

3

- Effice means lighting targeted to suit the premises.
- Optics specially developed around the LED modules.
 - Symmetrical, oblong optics for corridors.
 - Asymmetric optics for stairwell.

4

- Effice means control systems to reduce the energy bill.
- Compatible with the DALI protocol.
 - Optimum lighting management by our ultra-high performance SENSEI® detector.
 - Microwave ON / OFF.
 - Remote-controlled microwave settings.
 - Microwave detection with extinction warning and standby.

Just the right lighting thanks to an eco-designed luminaire. Light output targeted and suited to the type of application, extinction warning, wireless communication mode (*), remote-controlled adjustment, etc. You'll be amazed by the Effice luminaire's performance and ease of use.

(*) Availability from 1st quarter of 2015

EFFICE is available for 3 types of application:

- Effice for general lighting.
(opal diffuser and LED modules without optics)
- Effice for stairways.
(clear diffuser, LED modules with asymmetric optics)
- Effice for corridors.
(clear diffuser, LED modules with symmetrical optics)



Maximum energy efficiency.

Effice is an eco-designed luminaire suitable for different applications, so as to illuminate better while reducing power consumption.

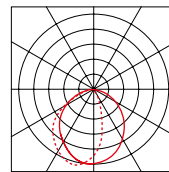
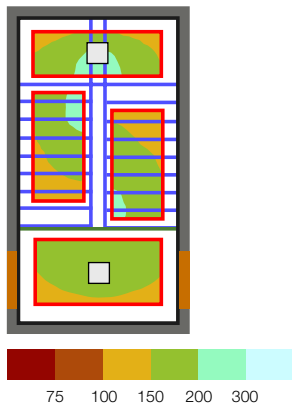
For an equivalent, standards-compliant result in terms of illumination and uniformity...

- Up to 70% fewer luminaires to install.
- Up to 70% energy saving.

Effice for stairways



> Lighting calculation: staircase for average 150 lux - 4000 K.



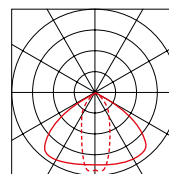
5 m × 2.6 m, height 10.6 m
simulation for 3-storey building
1 ceiling fixture each on landing and half-landing.
➔ > 150 lux average
➔ uniformity > 0.65
➔ UGR 22
The standard requires: 150 lux average
➔ uniformity 0.4
➔ UGR 25
overall power: 168 W

Stairways	Number of fixtures	Installed power	Power per m ² 100 Lux
1800 lm LED luminaire	20	400 W	5,04 W
32 W fluorescent luminaire	14	448 W	5,65 W
Effice for stairways	7	168 W	2,12 W

Effice for corridors



> Lighting calculation: corridor for average 100 lux - 4000 K



20 m × 1.5 m, height 2.5 m
4 luminaires spaced every 5 m: 104 lux average
➔ 51 lux min.
➔ uniformity 0.49
➔ UGR 21,9
The standard requires: 100 lux average
➔ uniformity 0.4
➔ UGR 28
overall power: 84 W

Corridors	Number of fixtures	Installed power	Power per m ² 100 Lux
1800 lm LED luminaire	8	160 W	4,89 W
32 W fluorescent luminaire	7	224 W	6,43 W
Effice for corridors	4	84 W	2,69 W

Maximum adaptability.

Effice is a luminaire that offers a solution to the illumination level constraints in public-access buildings without needing to increase the number of lighting fixtures.

Choosing the right Effice luminaire for your needs:

1 Which application?

- in hallways
- in stairways
- in corridors

- > Effice for general lighting
- > Effice for stairways
- > Effice for corridors

For DALI lighting management

- > Effice DALI

2 Detection with or without Extinction warning?

- in simple (on / off) mode
- in warning & stand-by mode

- > Effice + detection
- > Effice + detection + warning & stand-by

3 Slider adjustment or easy customizing via remote control?

- slider adjustment
- remote-control adjustment

- > Effice + detection
- > Effice + radio-controlled detection

4 What type of slave luminaire in a network of detection luminaires?

- in on / off mode
- in warning & stand-by mode
- in radio-controlled warning & stand-by mode

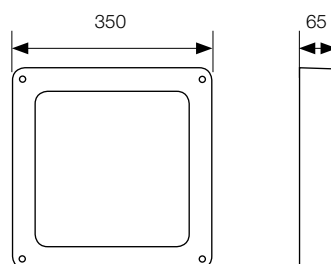
- > Effice
- > Effice + warning & stand-by control module
- > Effice + radio-controlled warning & stand-by control module

5 How can I create a network of luminaires if my wiring is not suitable?

- existing L / N wiring
- L / N / L' wiring possible

- > radio-controlled Effice with wireless mode activated
- > all models are compatible





Applications :

- General lighting: wall & ceiling mounted versions
- Corridor and stairway: ceiling mounted fitting

Caractéristiques générales :

- Coloured polycarbonate base.
- Diffuser: opal (General Lighting version) or clear (Corridor and stairway versions).
- LED module with or without optics (specifications: see relevant product).
- built-in Sensei® Pro movement detectors (specifications: see page 10).
- Stand-by power (detection) < 0.5 W.
- Power factor > 0.95.
- Side cable entry possible (with knockout)
- Stainless vandal-resistant screws.
- Tool for vandal-resistant screws: driver bit AC9005 (to be ordered separately).

Base colour:

- RAL9003 RAL7043

Options :

- 3000 K LED.
- Standard stainless fixings (crosspoint).
- Remote control (radio-controlled models): code 000 101.





Effice for general lighting

In hallways and indoor public areas, Effice lets you provide an illumination level that meets your expectations, while achieving substantial energy savings.

Its high-efficiency opal polycarbonate diffuser reduces glare and improves visual comfort.

A lighting design study will allow the specific features of your project to be taken into account and make it possible to validate the choice of positions and type of fixtures required. Don't hesitate to contact our Sales Department on +33 (0)2 43 60 40 00.

Effice for general lighting

Designation	Settings	Network communication (1)	Detector or controller	CCT (K)	Power (W)	Luminaire output (lm)	Luminaire efficacy (lm/W)	Module power (W)	Module efficacy (lm/W)	Code 	Code 
Fixtures without detection											
Effice	Sliders	hard-wired	-	4000	26	2131	82	23	136,3	043 016	044 013
Effice DALI	Sliders	hard-wired	-	4000	22	1856	84,4	20	132,4	043 030	044 037
Effice + warning & stand-by control module (2)	Sliders	hard-wired	DET0435	4000	27	2131	78,9	23	136,3	043 092	044 099
Effice + radio-controlled warning & stand-by control module. (3)	Remote control (4)	wireless or hard-wired	DET0440	4000	27	2131	78,9	23	136,3	043 115	044 112
Sensei Pro presence detection.											
Effice + detection	Sliders	hard-wired	DET0410	4000	27	2131	78,9	23	136,3	043 054	044 051
Effice + detection + warning & stand-by	Sliders	hard-wired	DET0425	4000	27	2131	78,9	23	136,3	043 139	044 136
Sensei Pro radio-controlled presence detection											
Effice + radio-controlled detection	Remote control (4)	wireless or hard-wired	DET0420	4000	27	2131	78,9	23	136,3	043 078	044 075
Effice + radio-controlled detection + warning & stand-by	Remote control (4)	wireless or hard-wired	DET0430	4000	27	2131	78,9	23	136,3	043 153	044 151

LED module without optics, opal diffuser.

(1) In a master / slave network: hard-wired using L / N / L' wiring or L / N only if wireless mode activated. Wireless mode available on models deliverable w.e.f.

1st quarter 2015. Requires optional remote control to activate.

(2) Slave luminaire for hard-wired L / N / L' network with warning & stand-by function.

(3) Slave luminaire for radio-controlled network in wireless mode or for control using the optional remote control.

(4) Optional remote control, to be ordered separately: code 000 101.



Effice for corridors

Effice is particularly suitable for lighting circulation areas in buildings. It allows you to reduce the number of luminaires while improving luminous efficiency.



With its oblong symmetrical optics and low glare, Effice helps improve lighting uniformity and visual comfort. Depending on the configuration of the corridor and the luminaire spacing possible, two types of fixtures are offered: Effice for long corridors and Effice for short or complex corridors.

A lighting design study will allow the specific features of your project to be taken into account and make it possible to validate the choice of positions and type of fixtures required. Don't hesitate to contact our Sales Department on +33 (0)2 43 60 40 00.

Effice for long corridors *(optimum luminaire spacing: 5 m)*

Designation	Settings	Network communication (1)	Detector or controller	CCT (K)	Power (W)	Luminaire output (lm)	Luminaire efficacy (lm/W)	Module power (W)	Module efficacy (lm/W)	Code 	Code 
Fixtures without detection											
Effice	Sliders	hard-wired	-	4000	21	1756	83,6	18	134,7	040 336	041 333
Effice DALI	Sliders	hard-wired	-	4000	22	1756	79,8	18	134,7	040 350	041 357
Effice + warning & stand-by control module (2)	Sliders	hard-wired	DET0435	4000	22	1756	79,8	18	134,7	040 411	041 418
Effice + radio-controlled warning & stand-by control module. (3)	Remote control (4)	wireless or hard-wired	DET0440	4000	22	1756	79,8	18	134,7	040 435	041 432
Sensei Pro presence detection											
Effice + detection	Sliders	hard-wired	DET0410	4000	22	1756	79,8	18	134,7	040 374	041 371
Effice + detection + warning & stand-by	Sliders	hard-wired	DET0425	4000	22	1756	79,8	18	134,7	040 459	041 456
Sensei Pro radio-controlled presence detection											
Effice + radio-controlled detection	Remote control (4)	wireless or hard-wired	DET0420	4000	22	1756	79,8	18	134,7	040 398	041 395
Effice + radio-controlled detection + warning & stand-by	Remote control (4)	wireless or hard-wired	DET0430	4000	22	1756	79,8	18	134,7	040 473	041 470

Effice for short / complex corridors *(optimum luminaire spacing: 3.30 m)*

Designation	Settings	Network communication (1)	Detector or controller	CCT (K)	Power (W)	Luminaire output (lm)	Luminaire efficacy (lm/W)	Module power (W)	Module efficacy (lm/W)	Code 	Code 
Fixtures without detection											
Effice	Sliders	hard-wired	-	4000	15	1311	87,4	12	147,1	040 015	041 012
Effice DALI	Sliders	hard-wired	-	4000	15	1311	87,4	12	147,1	040 039	041 036
Effice + warning & stand-by control module (2)	Sliders	hard-wired	DET0435	4000	15	1311	87,4	12	147,1	040 091	041 098
Effice + radio-controlled warning & stand-by control module. (3)	Remote control (4)	wireless or hard-wired	DET0440	4000	15	1311	87,4	12	147,1	040 114	041 111
Sensei Pro presence detection											
Effice + detection	Sliders	hard-wired	DET0410	4000	15	1311	87,4	12	147,1	040 053	041 050
Effice + detection + warning & stand-by	Sliders	hard-wired	DET0425	4000	15	1311	87,4	12	147,1	040 138	041 135
Sensei Pro radio-controlled presence detection											
Effice + radio-controlled detection	Remote control (4)	wireless or hard-wired	DET0420	4000	15	1311	87,4	12	147,1	040 077	041 074
Effice + radio-controlled detection + warning & stand-by	Remote control (4)	wireless or hard-wired	DET0430	4000	15	1311	87,4	12	147,1	040 152	041 159

Effice for stairways



Effice is suitable for lighting stairways and landings, often a source of difficulties in terms of illumination level to be achieved.

Its symmetrical/asymmetrical optics target the light onto the stair flights and the intermediate levels, while maintaining an illumination level complying with your expectations.

The Effice for stairways luminaire enables you to combine visual comfort and energy savings.

A lighting design study will allow the specific features of your project to be taken into account and make it possible to validate the choice of positions and type of fixtures required. Don't hesitate to contact our Sales Department on +33 (0)2 43 60 40 00.

Effice for stairways

Designation	Settings	Network communication (1)	Detector or controller	CCT (K)	Power (W)	Luminaire output (lm)	Luminaire efficacy (lm/W)	Module power (W)	Module efficacy (lm/W)	Code 	Code 
Fixtures without detection											
Effice	Sliders	hard-wired	-	4000	23	2338	101,7	20	150,4	040 176	041 173
Effice DALI	Sliders	hard-wired	-	4000	19	2048	107,8	17	152,4	040 190	041 197
Effice + warning & stand-by control module (2)	Sliders	hard-wired	DET0435	4000	24	2338	97,4	20	150,4	040 275	041 272
Effice + radio-controlled warning & stand-by control module. (3)	Remote control (4)	wireless or hard-wired	DET0440	4000	24	2338	97,4	20	150,4	040 251	041 258
Sensei Pro presence detection											
Effice + detection	Sliders	hard-wired	DET0410	4000	24	2338	97,4	20	150,4	040 213	041 210
Effice + detection + warning & stand-by	Sliders	hard-wired	DET0425	4000	24	2338	97,4	20	150,4	040 237	041 234
Sensei Pro radio-controlled presence detection											
Effice + radio-controlled detection	Remote control (4)	wireless or hard-wired	DET0420	4000	24	2338	97,4	20	150,4	040 299	041 296
Effice + radio-controlled detection + warning & stand-by	Remote control (4)	wireless or hard-wired	DET0430	4000	24	2338	97,4	20	150,4	040 312	041 319

Pages 8 and 9:

LED module with optics, clear diffuser.

(1) In a master / slave network: hard-wired using L / N / L' wiring or L / N only if wireless mode activated. Wireless mode available on models deliverable w.e.f. 1st quarter 2015. Requires optional remote control to activate.

(2) Slave luminaire for hard-wired L / N / L' network with warning & stand-by function.

(3) Slave luminaire for radio-controlled network in wireless mode or for control using the optional remote control.

(4) Remote control not included: must be ordered separately (code: 000 101). Radio-control: available 1st quarter 2015.

Sensei



- Choice of:**
- on / off
 - warning + stand-by function

The Sensei® professional detectors have been specially developed for LED technology:

• Sensei® Pro detector

For installations subject to intensive use and master/slave luminaire networks up to 700 W or 700 VA.

• Sensei® i Pro detector

This radio-controlled version of the Sensei Pro allows you to choose wireless or hard-wired communication between luminaires and remote-controlled device management.

An optional control module for luminaires without detectors:

• Deshi® warning + stand-by control module

Incorporated into “slave” luminaires without detectors, the option Deshi module makes it possible to make them self-contained and to control the warning + stand-by function from a simple instruction issued by a “master” luminaire fitted with Sensei Pro detectors*.

In this way, the detecting luminaire no longer carries the load of all the luminaires: detector life is extended, wiring simplified, and safety improved.

In the radio-controlled version, the Deshi i module allows you to activate the wireless mode and to adjust settings by remote control.

(*) In the case of control by an external timer: please enquire about compatibility.

Detectors	Source type	On / off detector	Detector with stand-by and warning	Slave module, stand-by and warning	Setting type	Sensitivity	Time delay	Brightness	Standard mains wiring	Mains wiring if wireless mode enabled (4)	Max. loading on L' W / VA	Stand-by consumption
Sensei Pro	LED	DET0410	DET0425	DET0435 (1)	sliders	25 / 50 / 75 / 100%	1 mn / 3 mn	∞ / 50 lux	L / N / L'	n / a	700	≤ 0,5 W
Sensei i Pro	LED	DET0420	DET0430	DET0440 (2)	Remote control	customizable	customizable	customizable	L / N / L'	L / N	700	≤ 0,5 W

Detection technology: 5.8 GHz microwave, fail-safe (in the event of a malfunction, lighting is maintained).

n / a : Not available.

Consummation en fonctionnement : ≤ 1 W.

(1) Optional, must be combined with DET0425.

(2) Optional, must be combined with DET0430.

(3) Radio-control: characteristic available on models deliverable as from 1st quarter 2015. Activated via remote control.

i Remote control

The i remote control is quick and intuitive to use, thanks to its particularly logical interface.

The i remote control lets you change the detector factory settings in order to adapt them to the specific requirements of your project. It also lets you duplicate and transfer the settings from the master luminaire to the other luminaires (masters or slaves).

Unlike manual or infra-red remote settings, the remote control does not require the luminaire to be opened up, so setting is super-fast, even for several luminaires.

Unlike manual or infra-red remote settings, the remote control does not require the luminaire to be opened up, so setting is super-fast, even for several luminaires.

The i remote control also lets you activate the radio mode and the diagnostics and expert functions.



Spot-on lighting !

Since 2011, Sécurlite has been designing and manufacturing its own electronic solutions and LED and movement detector modules in-house.

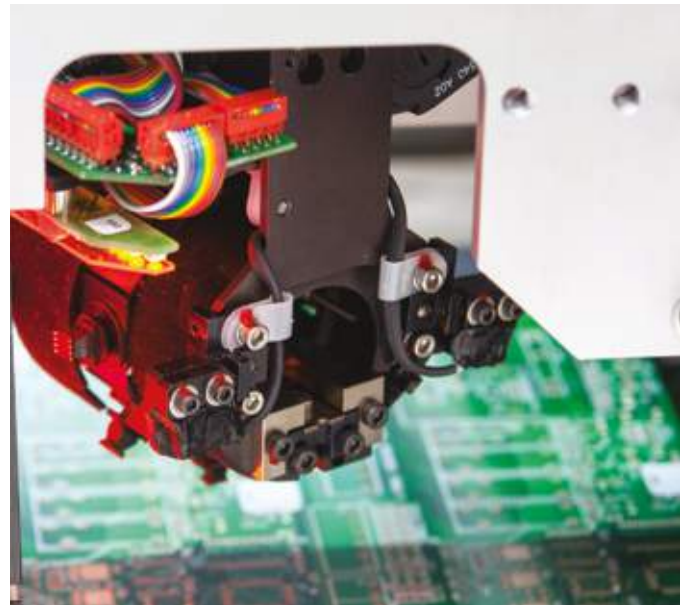
An electronics Research & Development laboratory and a photometry, test, and measurement laboratory have been set up at our site in La Ferté-Bernard in the French département of Sarthe.

In 2013, our production facility has been equipped with an automated SMD line for manufacturing electronic circuits and LED modules.

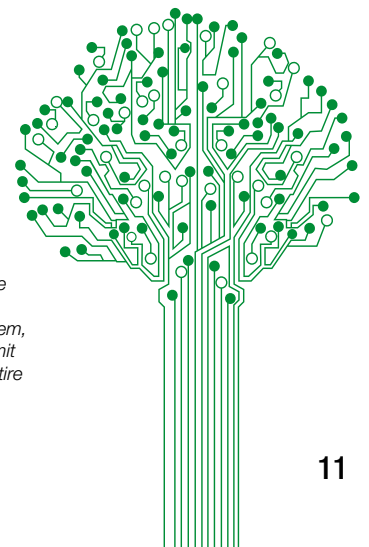
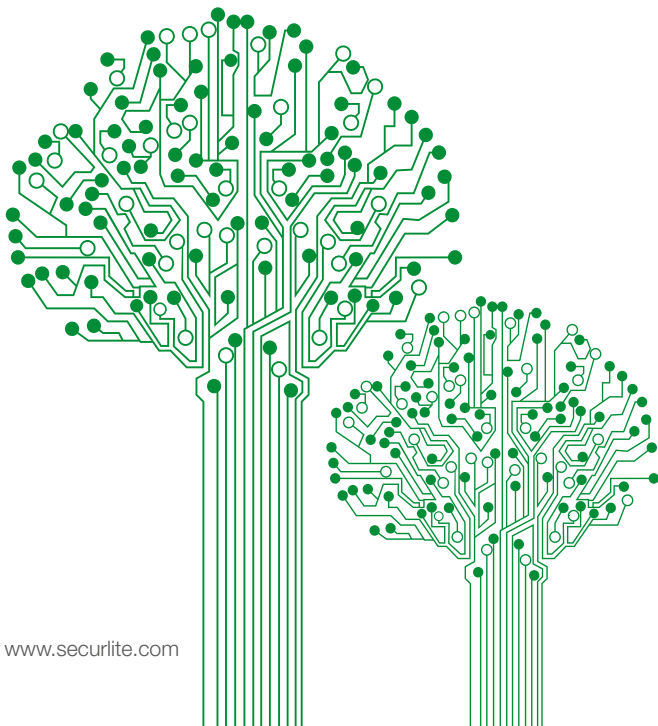
This policy of integration enables us to maintain better control over quality and costs, as well as offering greater responsiveness to our customers' requests.

It also enables us to develop in-house the skills and expertise that are going to empower innovation and stimulate the controlled expansion of our company in France and internationally.

The development of our company, a small, independent family business, is based on a corporate and environmental responsibility that represents our commitment towards our customers, our staff, and our environment.



For further details of our commitments in terms of corporate and environmental responsibility, please see: www.securlite.com/commitments



Eco-design: we seek to illuminate better while reducing energy consumption. From the raw materials right up to recycling them, we design our products in such a way as to limit their environmental impact throughout their entire life cycle. Sécurlite uses the EIME life-cycle analysis and eco-design software from Bureau Veritas.

SÉCURLITE
Z.I. des Ajeux
72400 La Ferté-Bernard
France
Tél. : +33 (0)2 43 60 40 00
Fax : +33 (0)2 43 60 40 09

www.securlite.com

Technical and dimensional data are given for information only and may be modified at any time without notice. Please enquire before ordering.
Our sales Terms & Conditions and guarantee conditions are available from www.securlite.com/cgv or upon request from our Sales Department.



Printed on PEFC paper.
A mark guaranteeing a sustainably-managed forest.
(Program for the Endorsement of Forest Certification)

Photo credits: Sécurite - Studio Image (Belgique)
Fotolia - Shutterstock - Europlacer